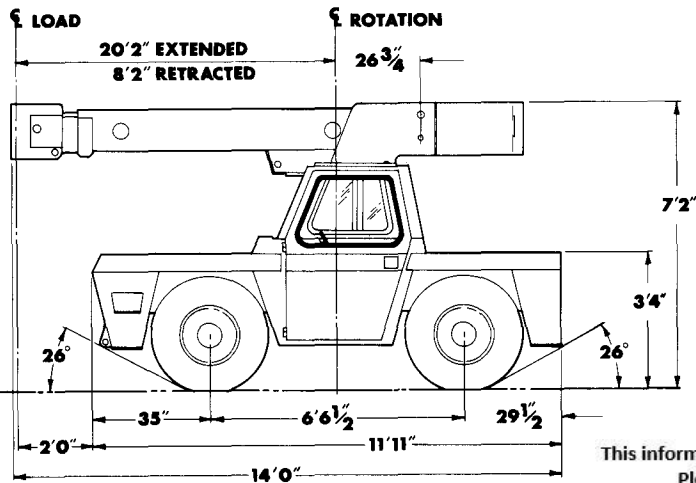


## PRINCIPAL DIMENSIONS



### ALL CAPACITIES FOR 360° ROTATION

LOAD RADIUS FEET	3-SECTION BOOM		10' BOOM EXTENSION INSTALLED	
	ON RUBBER	ON OUTRIGGERS	ON RUBBER	ON OUTRIGGERS
5	10700	17000	6700	7000
6	9500	14500	5950	6000
8	6400	10250	4750	5000
10	4450	7700	3900	4000
12	3400	6350	3325	3450
14	2675	5350	2975	3050
16	2175	4450	2600	2700
18	1840	3950	2325	2350
20	1550	3550	1800	2250
22			1500	2250
24			1300	2250
26			1100	2250
28			950	2125
30			800	1900

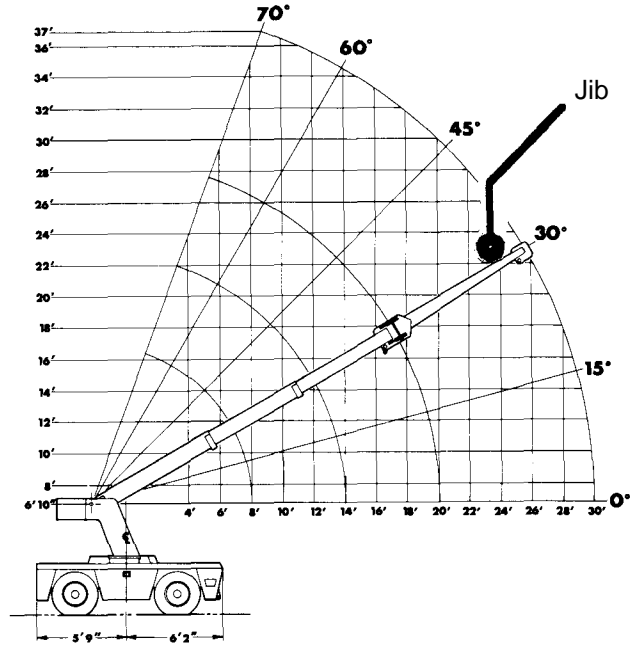
CARRY CAPACITY SPEED LIMIT 3 MPH

DECK LOAD CAPACITY 12000 LBS. (CENTERED OVER AXLE)

PERSONNEL BUCKET CAPACITY - OUTRIGGERS EXTENDED 300 LBS. PER BUCKET 600 LBS. TOTAL. THE BOOMS ON THIS UNIT ARE ALL STEEL AND HAVE NO LINE VOLTAGE RATING. MAXIMUM HYDRAULIC PRESSURE 3000 PSI.

DEDUCT 120 LBS. FROM ALL "ON RUBBER" CAPACITIES WHEN BOOM EXTENSION IS STOWED ON BASE BOOM.

ALL CAPACITIES APPLY TO OPERATION ON FIRM LEVEL SURFACES.



## Broderson IC 80-1A



TECH  
SPEC

# IC-80-B



### AT A GLANCE:

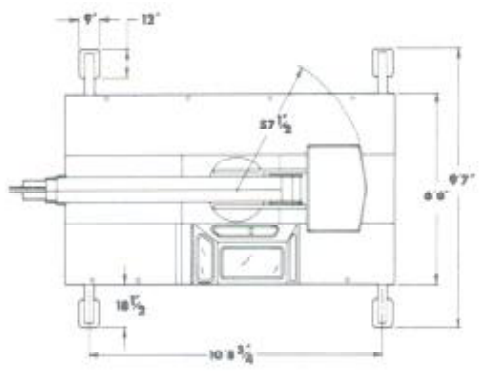
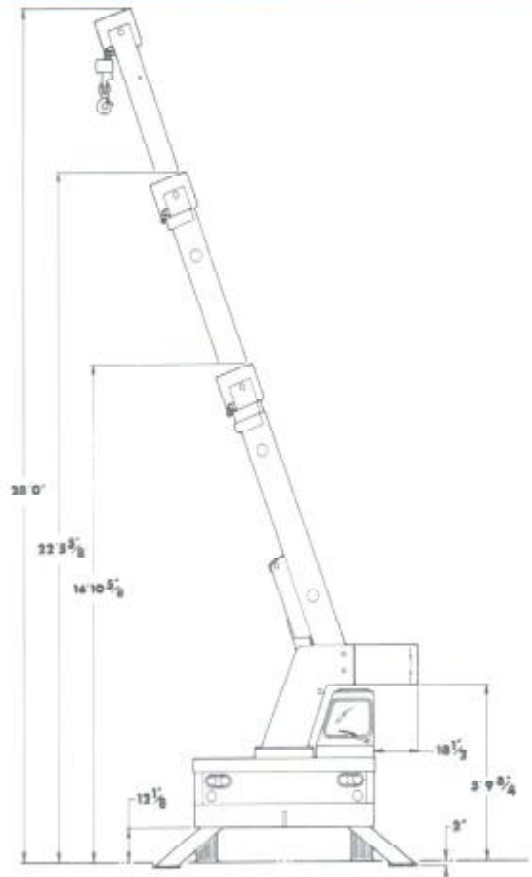
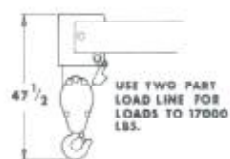
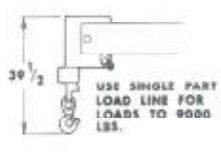
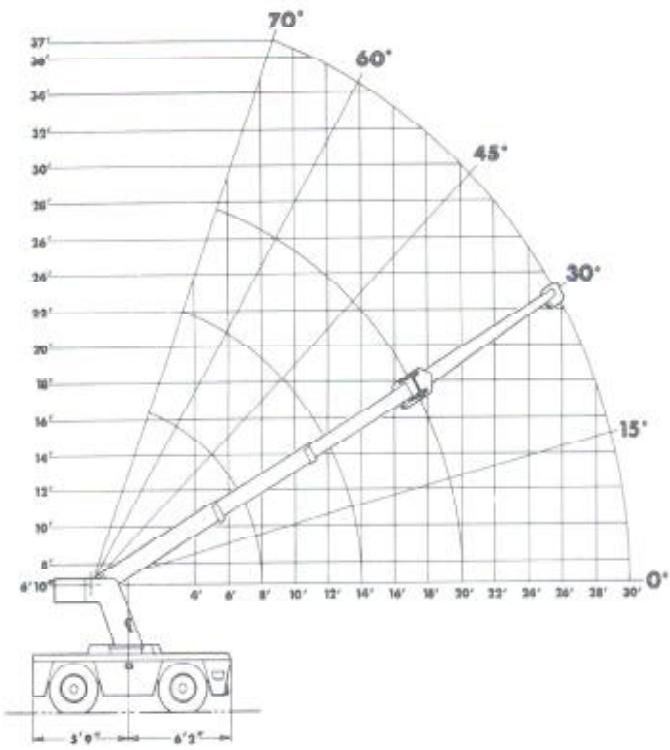
- Rated Capacity — 17,000
- Vertical Reach — 20'0"
- Horizontal Reach — 20'2"
- Continuous rotation • 14'9" turning radius • Large Carry Deck • Hyd. outriggers •
- Built tough to work tough in industrial applications where a sure touch is needed on loads up to 8½ tons.

**bmc BRODERSON**  
Manufacturing Corp.

P.O. Box 14770, Lenexa, Kansas 66215 • (913) 888-0606



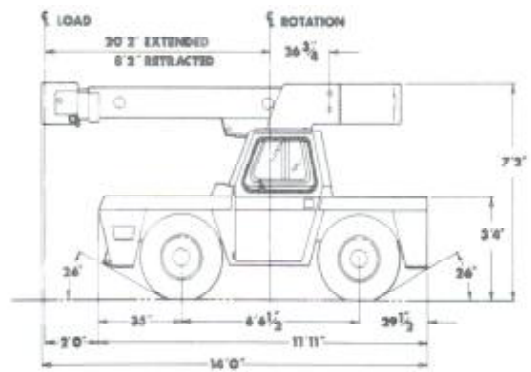
# TC-80-B



ALL CAPACITIES FOR 360° ROTATION

LOAD RADIUS FEET	3-SECTION BOOM		10' BOOM EXTENSION INSTALLED	
	ON RUBBER	ON O/R*	ON RUBBER	ON O/R*
5	9450	17000	5900	7000
6	8375	14500	5290	6000
8	6650	10250	4200	5000
10	5025	7700	3450	4000
12	3900	6550	2935	3450
14	2375	5550	2625	3050
16	1825	4450	2300	2700
18	1625	3950	1875	2250
20	1375	3550	1600	2250
22			1325	2250
24			1150	2250
26			975	2250
28			850	2125
30			700	1900

\*OUTRIGGERS





**General:**

Weight 13,700 lbs

Travel Speeds (calculated):

Gear	Forward	Reverse
First	5.4	4.9
Second	11	10
Third	20	18.2

Drawbar Pull:

Gear	Pounds
First	6,714*
Second	3,130
Third	1745

Turning radius

(C/L of outside steering wheel) 14'9"

Aisle width for 90° turn 10'3"

\* Wheels will spin on dry concrete at 3,800 lbs.

**Engine:**

	Standard	Optional	Optional
Make	Continental	Perkins	Continental
Model	TM27	D4 203	TMD27
Type	Gas	Diesel	Diesel
Number of cylinders	4	4	4
Displacement	165	203	165
HP at governed RPM	64	63	58

**Electrical:**

12 volt system

Lighting group:

One pair headlights with Hi and Low beams, integral tail, brake and turn signals and front turn signals

Instrument group:

Fuel, ammeter, oil pressure, water temperature, converter oil temperature gauges and hourmeter

**Transmission:**

Make Borg Warner

Model 72T/T18

Type Reversing gear box and manual shift three speed gear box. Equipped with torque converter and transmission oil cooler.

Gear Ratio	Gear	Forward	Reverse
	First	6.324:1	6.956:1
	Second	3.092:1	3.401:1
	Third	1.686:1	1.855:1

Torque Converter: Stall ratio of 2.15:1

**Axles:**

Drive Axle:

Make	Rockwell
Gear ratio	7.2:1
Location	Front

Steering Axle (non-driving)

Make	Rockwell
------	----------

**Brakes:**

Service 4-Wheel drum type brakes

Parking Band type mounted on transmission

**Tires:**

Standard 9.00 x 15, 12-ply rating, Highway tread

Optional 10.00 x 15, 12-ply rating, Highway tread

Optional Grizzly Supersoft XS250x15 solid rubber

**Fuel Tank:**

20 gallon capacity

**Outriggers:**

Four hydraulic outriggers of box beam construction with direct connected holding valves.

Independent controls for left and right hand outriggers

Outrigger pad dimension 9" x 12"

**Cargo Deck:**

60 square feet

12,000 lbs. maximum capacity

Steps located on front corners

**Hydraulic System:**

Tandem pump, direct-driven by engine crankshaft, rated at 16 and 32.5 gpm at rated rpm

Hydraulic oil tank capacity of 17 gallons

**Steering:**

Full hydraulic orbitrol unit with two double acting

2 inch cylinders attached to rear axle

**Crane:**

Boom Movement:

Rotation Continuous

Elevation 0° to 70°

Extension 8'2" to 20'2" (12')

Boom Speeds:

Rotation 1.7 rpm

Elevation 15 seconds

Extension 28 seconds

Boom Assembly:

Three section boom assembly equipped with bearing pad, double-acting hydraulic cylinders equipped with direct-connected holding valves and boom angle indicator on each side of boom.

Boom Rotation:

Heavy-duty ball rotation gear with external teeth support boom. Rotation is powered by hydraulic motor and worm gear drive.

Boom Winch:

Turret-mounted

Hydraulic powered

Bare drum line pull of 10,000 lbs.

Winch line speed of 110 fpm

90 feet of 5/8" wire rope, downhaul weight and swivel

hook, standard