



GRADALL

534C9 MATERIAL HANDLER



SPECIFICATIONS

Performance

Rated Capacity

At 24" (610 mm) load center,
9,000 lbs. (4,082 kg)

Maximum Lift Height

40 ft. (12.2 m)

Lift Speed (boom retracted)

Empty 105 f.p.m. (32 m/min)
Loaded 97 f.p.m. (29.5 m/min)

Boom Speed

Extend 100 f.p.m., (30 m/min)
Retract 105 f.p.m. (32 m/min)

Travel Speeds Forward and Reverse

2WD 0-18 mph (29 km/hr)
4WD 0-6 mph (9.7 km/hr)

Drawbar Pull

Loaded 18,000 lbs. (8,165 kg)

Operating Weight

With 48" (122m) carriage and forks,
23,500 lbs. (10,660 kg)

Specifications

Engine

Make and Model Cummins
Fuel Turbo Diesel
Cycles 4
No. of Cylinders 4
Displacement 239 cu. in. (3.9 L)
Rated Speed 2500 rpm
Max. Gross BHP 100 HP (74.8 kw)
Fuel Tank 38 gal. (151.4 L)

Engine Filters

Two-stage dry air cleaner - centrifugal
pre-cleaner with continuous dust ejector
PLUS cleanable and replaceable dry filter
element. Visual service indicator.

Replaceable element-type fuel filter. Full-flow
replaceable-element engine oil filter.

Electrical System

Voltage - 12V
Alternator - 65 amp
Battery - 810 Cold Cranking AMP at 0°F

Transmission

Self-contained, swashplate design,
variable displacement, over center, piston
pump. Neutral start switch. (Park brake
must also be engaged to start.)

2WD and 4WD inching.

2WD - 4WD switch on dash.

Forward, neutral, reverse lever on left
of steering column.

Single foot pedal control provides both
braking and inching for lifting while
maneuvering vehicle.

Electro/hydraulic traction lock valve for
superior tractive effort.

Axles

Planetary hubs with piston motors on
rear axle.

Piston motor-driven planetary front axle
with high-bias, limited slip differential.

Brakes

Service - Hydraulic wet disc brake on
each front wheel.

Hydraulic dynamic braking on front axle
and both rear wheels.

Parking

Wet disc spring-applied electro/hydraulic
release, fail safe on both front wheels.

Light on dash indicates when brake is on.

Tires

13:00x24 - 12PR, G2 type.

Steering

Hydraulic power steering with manual
backup. Rear wheel steering, 90° pivot
around either front tire. Outside turning
radius is less than chassis length.

Instruments

Volt meter, hour meter, engine oil pressure,
temperature, fuel gauge. All gauges
protected by Lucite SAR Acrylic anti-
vandalism cover. Horn, back-up alarm.

Controls

Grouped for operator comfort and
convenience.
Boom lift and crowd on single joystick.
Tilt and sway lever to left on dash panel.
Foot throttle.
Floor mounted traction lock switch.
Optional: Right-side tilt and sway levers
or tilt on joystick.

Hydraulic System-Drive

6300 PSI closed loop with piston pump
and motors.

All hydraulic connections ORS and Code
62 O-ring flanges.

Integral reservoir with implement hydraulics.

8 micron suction filter for charge pump.

Hydraulic System-Implement

Single-section gear pump.
40 gal. (151.4 L) system capacity.

8 micron return filter with visual service
indicator and suction strainer.

Lift, crowd, tilt and sway cylinders have safety
checks to prevent dropping of load in the
event of hose or other hydraulic failure.

Accessories

Winch**Light Package****Cab Enclosure**

Lockable, swinging door. Windshield wiper.

Tilt on Joystick**Heater & Defroster Fan****Cold Start Package****Rotating Beacon****Radial Tires****Auxiliary Hydraulic Circuit**

Required for all attachments equipped with
cylinders or other hydraulic components.
Consists of valves, controls, hydraulic lines.

Right Hand Tilt & Sway Controls**Rear Axle Stabilization**

Attachments

Carriage

48" (122 cm)

Carriage

66" (168 cm)

Slope Pile Carriage

48" (122 cm) and 66" (168 cm)

Swing Carriage

100°

Pallet Forks

2" x 4" x 48" (5 cm x 10.2 cm x 122 cm)

Cubing Forks

2" x 2" x 48" (5 cm x 5 cm x 122 cm)

Instant Hook**Vertical Mast**

6' (1.7 m)

Swing Mast

6' (1.7 m)

Truss Boom

10' (3 m)

Bucket

0.75 CY (0.57 m³) or 1.25 CY (0.93 m³)

Truss Boom With Winch

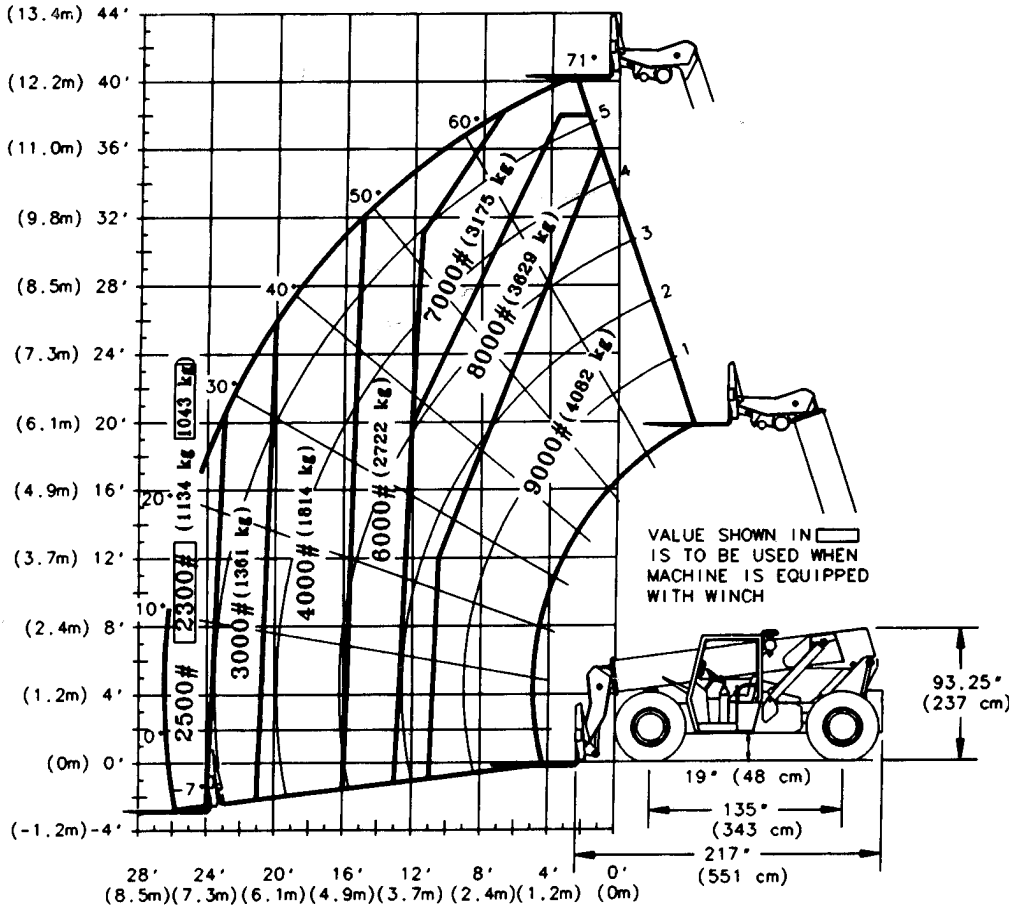
10'

Carriage

72"

This information is for reference use only. Operators manual should be consulted and adhered to.

Please contact CONNELLY CRANE RENTAL at (313) 531-2700 for further information.



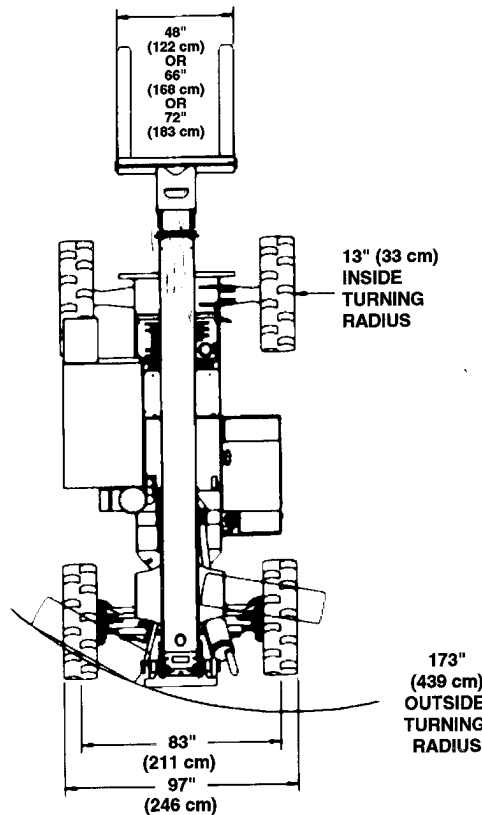
IMPORTANT!

Rated lift capacities shown are with machine on a firm, level surface with undamaged, properly inflated tires. Machine specifications and stability are based on rated lift capacities at specific boom angles and boom lengths. If specifications are critical, the proposed application should be discussed with your dealer.

DO NOT exceed rated lift capacity loads, as unstable and dangerous machine conditions will result.

DO NOT tip the machine forward to determine the allowable load.

Gradall does not approve the use of its material handlers for lifting personnel under any conditions.



This machine is designed to meet specifications of ASME B56.6a-1994. It is Gradall Policy to continually improve its products. Therefore designs, materials and specifications are subject to change without notice and without incurring any liability on units already sold. Units shown may have optional equipment.

GRADALL®

406 Mill Ave. SW, New Philadelphia, Ohio 44666
 Phone (330) 339-2211 Fax (330) 339-8468
<http://www.gradall.com>