



534C-6

ROUGH TERRAIN

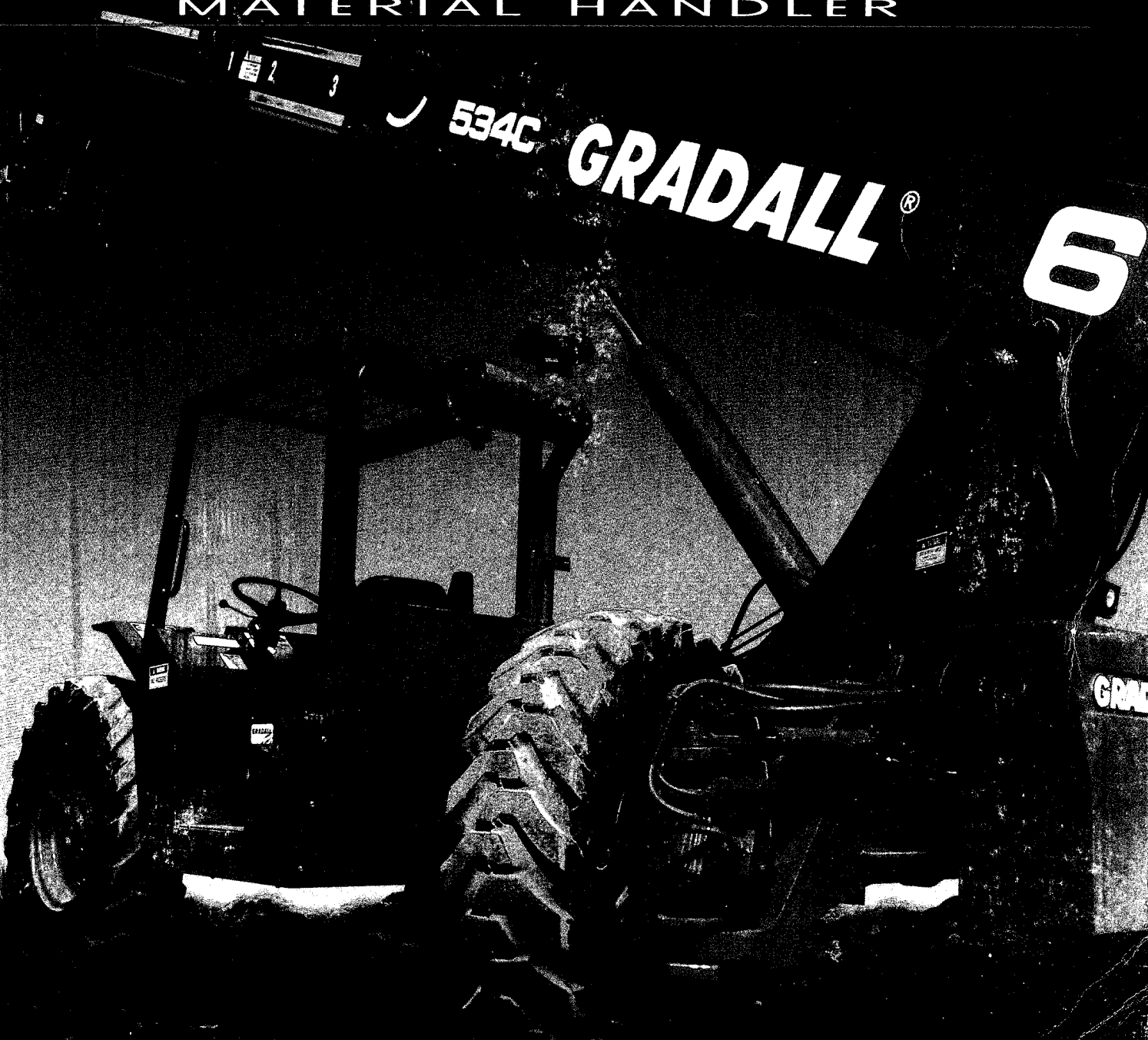
90° REAR-PIVOT STEERING

6,000 LB. (2,722 kg) CAPACITY

36' (11 m) LIFT HEIGHT

GRADALL®

MATERIAL HANDLER



This information is for reference use only. Operators manual should be consulted and adhered to. Please contact CONNELLY CRANE RENTAL at (313) 531-2700 for further information.



**534C-6
PERFORMANCE
SPECIFICATIONS**

RATED CAPACITY at 24" (610 mm)
Load Center6,000 lb. (2,722 kg)

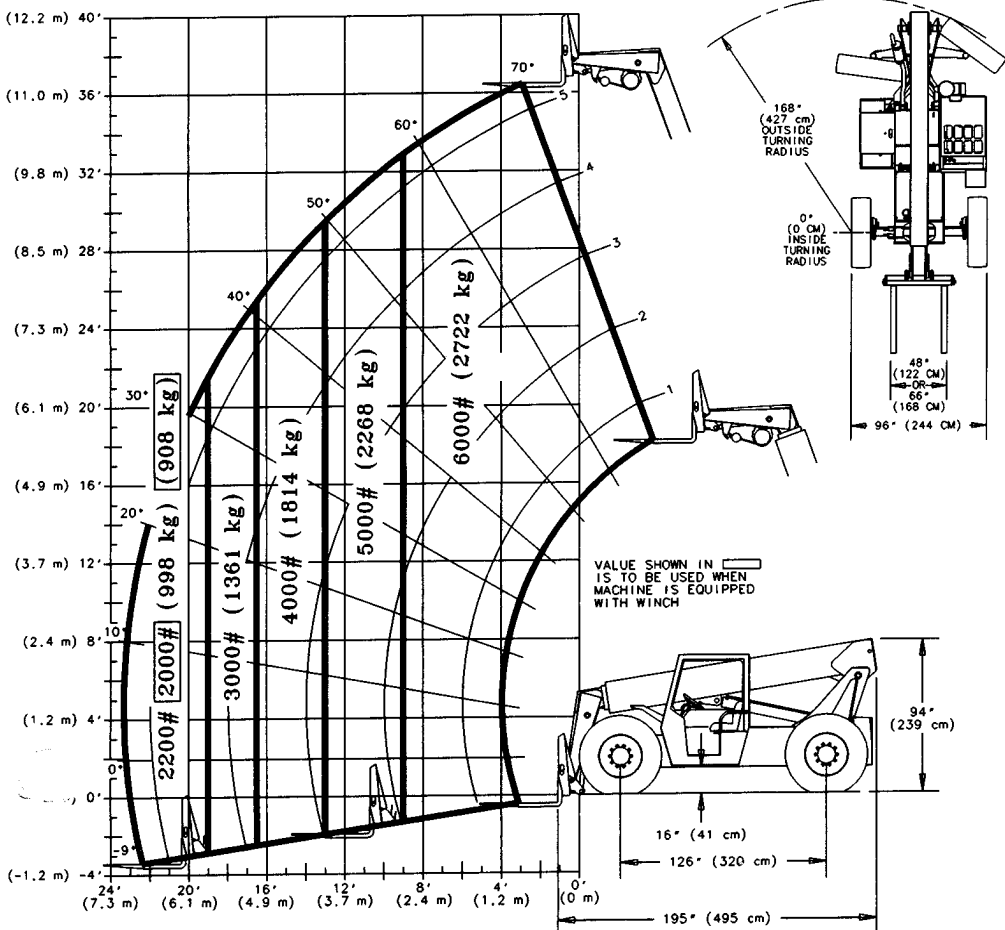
LIFT SPEED (Boom Retracted)
Empty.....99.5 f.p.m. (30.3 m/min)
Loaded.....92 f.p.m. (28 m/min)

BOOM SPEED
Extend112 f.p.m. (34.1 m/min)
Retract103.75 f.p.m. (31.6 m/min)

TRAVEL SPEEDS—Forward & Reverse
MPH (KM/HR)
4WD-2WD.....7.5-16 (12-25.7)

OPERATING WEIGHT
With 48" (122 cm) Carriage & Forks
534C-6.....17,830 lb. (8,088 kg)

TRACTIVE EFFORT (Loaded)
534C-6.....14,700 lb. (6,668 kg)
@ 1 MPH (1.6 km/hr)



IMPORTANT
Rated lift capacities shown are with machine on a firm, level surface with undamaged, properly inflated tires. Machine specifications and stability are based on rated lift capacities at specific boom angles and boom lengths. If specifications are critical, the proposed application should be discussed with your dealer.

DO NOT exceed rated lift capacity loads, as unstable and dangerous machine conditions will result. DO NOT tip the machine forward to determine the allowable load.

Gradall does not approve the use of its material handlers for lifting personnel under any conditions.

This information is for reference use only. Operators manual should be consulted and adhered to. Please contact CONNELLY CRANE RENTAL at (313) 531-2700 for further information.



GRADALL®

534C-6 MATERIAL HANDLER

DRIVE LINE SPECIFICATIONS:

ENGINE

Make and Model Cummins 4B3.9
 Fuel No. 2 Diesel
 Cycles 4
 No. of Cylinders 4
 Displacement 239 cu. in. (3.9 L)
 Rated Speed 2500 rpm
 Max. Gross BHP 76 HP (57 kw)
 Fuel Tank 40 gal. (151.4 L)

ENGINE FILTERS

Two-stage dry air cleaner - centrifugal pre-cleaner with continuous dust ejector PLUS cleanable and replaceable dry filter element. Visual service indicator.
 Replaceable element-type fuel filter/water separator. Full-flow replaceable-element engine oil filter.

ELECTRICAL SYSTEM

Voltage - 12V Alternator - 63 amp Battery - 810 Cold Cranking AMP at 0°F

TRANSMISSION

Self-contained, swashplate design, variable displacement, over center, piston pump.
 Neutral start switch. (Park brake must also be engaged to start.)
 Full 4-wheel inching.
 2WD - 4WD switch on dash.
 Forward, neutral, reverse lever on left of steering column.
 Single foot pedal control provides both braking and inching for lifting while maneuvering vehicle.
 Electro/hydraulic traction lock valve for superior tractive effort.

AXLES

Planetary hubs with piston motors on rear axle.
 Piston motor-driven planetary front axle with high-bias limited slip differential.

BRAKES

Service - Hydraulic wet disc brake on each front wheel. Hydraulic dynamic braking on front axle and both rear wheels.

PARKING BRAKES

Spring-applied electro/hydraulic release, fail safe on both front wheels.
 Light on dash indicates when brake is on.

TIRES

13:00x24 - 12PR, G2 type (common wheel).
 Optional: 13:00R24 radial tires.

STEERING

Hydraulic power steering with manual backup.
 Rear wheel steering, 90° pivot around either front tire.

INSTRUMENTS

Volt meter, hour meter, engine oil pressure gauge, fuel gauge, water temperature gauge, horn, back-up alarm.

CONTROLS

Grouped for operator comfort and convenience.
 Boom lift and crowd on single joystick.
 Right-side tilt and sway levers.
 Foot throttle.
 Floor mounted traction lock switch.
 Optional: Single-lever tilt/sway control mounted on left side of dash.

HYDRAULIC SYSTEM - DRIVE

5500 PSI closed loop with piston pump and motors.
 All hydraulic high pressure connections ORS and Code 62 O-ring flanges.
 Integral reservoir with implement hydraulics.

HYDRAULIC SYSTEM

Single-section gear pump.
 40 gal. (151.4 L) system capacity.
 Two 8 micron filters with visual service indicator and suction strainer.
 Lift, crowd, tilt and sway cylinders have safety checks to prevent dropping of load in the event of hose or other hydraulic failure.

*This machine is designed to meet specifications of ASME B56.6a-1994.
 It is Gradall Policy to continually improve its products. Therefore designs, materials and specifications are subject to change without notice and without incurring any liability on units already sold. Units shown may have optional equipment.*

CAB ENCLOSURE

Lockable, swinging door.
 Windshield wiper.

HEATER & DEFROSTER

LIGHT PACKAGE

VANDAL KIT

AUXILIARY HYDRAULIC CIRCUIT

Required for all attachments equipped with cylinders or other hydraulic components.
 Consists of valves, controls, hydraulic lines.

COLD START PACKAGE

RADIAL TIRES

LEFT HAND TILT/SWAY CONTROL

CARRIAGE

48" (122 cm) QUICK SWITCH

CARRIAGE

66" (168 cm) QUICK SWITCH

SLOPE PILE CARRIAGE

48" (122 cm) QUICK SWITCH

DRYWALL CARRIAGE

100° SWING CARRIAGE

PALLET FORKS

2" x 4" x 48" (5 cm x 10.2 cm x 122 cm)

CUBING FORKS

2" x 2" x 48" (5 cm x 5 cm x 122 cm)

INSTANT HOOK

QUICK SWITCH

VERTICAL MAST

6' (1.7 m) QUICK SWITCH

SWING MAST

6' (1.7 m)

TRUSS BOOM

10' (3 m)

BUCKET

.75 CY (.57 m³)

BUCKET

1.25 CY (.93 m³)

TRUSS BOOM WITH WINCH

10' (3 m)

406 Mill Ave. SW, New Philadelphia, Ohio 44663
 Phone (330) 339-2211 FAX (330) 339-8468

This information is for reference use only. Operators manual should be consulted and adhered to.

Please contact CONNELLY CRANE RENTAL at (313) 531-2700 for further information.