

GRADALL

544D

MATERIAL HANDLER



544D

SPECIFICATIONS

Rated Capacity

at 24 in. (610 mm) load center,
10,000 lb. (4,536 kg)

Maximum Lift Height

55 ft. (16.8 m)

Lift Speed (boom retracted)

Empty 110 f.p.m. (34 m/min);
Loaded 100 f.p.m. (30 m/min)

Boom Speed

Extend 130 f.p.m. (40 m/min)
Retract 130 f.p.m. (40 m/min)

Travel Speeds Forward and Reverse

4WD-2WD 6.5-19 mph (10.5-30.6 km/hr)

Operating Weight

With 48" (122 m) carriage and forks,
13,570 lb. (15,227 kg)

Tractive Effort (Loaded)

14,700 lb. (6,668 kg) @ 1 mph (1.6 km/hr)

Engine

Make and Model ... Cummins B3.9C-130
Fuel Turbo-charged
after cooled Diesel

Cycles 4
No. of Cylinders 4
Displacement 239 cu. in. (3.9 L)
Rated Speed 2500 rpm
Max. Gross BHP 130 HP (97 kw)
Fuel Tank 38 gal. (141 L)

Engine Filters

Two-stage dry air cleaner - centrifugal
pre-cleaner with continuous dust ejector
PLUS cleanable and replaceable dry filter
element. Visual service indicator.

Replaceable element-type fuel filter/water
separator. Full-flow replaceable-element
engine oil filter.

Electrical System

Voltage - 12V
Alternator - 65 amp
Battery - 1050 Cold Cranking AMP at 0°F

Transmission

Self-contained, swashplate design,
variable displacement, over center, piston
pump. Neutral start switch. (Park brake
must also be engaged to start)

Full 4-wheel inching. (4WD only)

2WD - 4WD switch on dash.

Forward, neutral, reverse lever on left
of steering column.

Single foot pedal control provides both
braking and inching for lifting while
maneuvering vehicle.

Electro/hydraulic traction lock valve for
superior tractive effort.

Axles

Planetary hubs with piston motors on
rear axle.

Piston motor-driven planetary front axle
with high-bias, limited slip differential.

Rear axle stabilization.

Brakes

Service - Hydraulic wet disc brake on
each front wheel.

Hydraulic dynamic braking on front axle
and both rear wheels.

Parking Brakes

Wet disc spring-applied electro/hydraulic
release, fail safe on both front wheels.

Light on dash indicates when brake is on.

Tires

14:00x24 - 12PR, G2 type, 623 lb.
(283 kg) CaCl filled.
Optional: 14:00 R24 radial tires, 623 lb.
(283 kg) CaCl filled.

Steering

Hydraulic power steering with manual
backup. Rear wheel steering, 90° pivot
around either front tire. Outside turning
radius is less than chassis length.

Instruments

Volt meter, hour meter, engine oil pressure
gauge, fuel gauge, water temperature gauge,
horn, back-up alarm.

All gauges protected by clear acrylic .125"
thick.

Controls

Grouped for operator comfort
and convenience.
Boom lift and crowd on single joystick.
Right-side tilt and sway levers.
Foot throttle.
Floor mounted traction lock switch.
Standard right side rear view mirror.
Opt. Tilt and sway lever on left of dash panel.

Hydraulic System-Drive

6300 PSI closed loop with piston pump
and motors.

8 micron suction filter for charge pump.

All hydraulic connections ORS and Code
62 O-ring flanges.

Integral reservoir with implement hydraulics.

Hydraulic System-Implement

Single-section gear pump.

8 micron filter with visual service indicator
and suction strainer.

Lift, crowd, tilt and sway cylinders have safety
checks to prevent dropping of load in the
event of hose or other hydraulic failure.

Accessories

Cab Enclosure

Lockable, swinging door with separate
upper door. Windshield wiper.

Heater & Defroster

Light Package

Vandal Kit

Auxiliary Hydraulic Circuit

Required for all attachments equipped with
cylinders or other hydraulic components.
Consists of valves, controls, hydraulic lines.

Cold Start Package

Radial Tires

Right Hand Tilt/Sway Controls

Winch

Tilt on Joy Stick

Rotating Boom

Attachments

Carriage

48" (122 cm) Quick Switch

Carriage

66" (168 cm) Quick Switch

Slope Pile Carriage

48" (122 cm) and 66" (168 cm) Quick Switch

Drywall Carriage

Swing Carriage

100°

Pallet Forks

2" x 4" x 48" (5 cm x 10.2 cm x 122 cm)

Cubing Forks

2" x 2" x 48" (5 cm x 5 cm x 122 cm)

Instant Hook Quick Switch

Vertical Mast

6' (1.7 m) Quick Switch

Swing Mast

6' (1.7 m)

Truss Boom

10' (3 m)

Bucket

0.75 CY (0.57 m³) or 1.25 CY (.93 m³)

Truss Boom With Winch

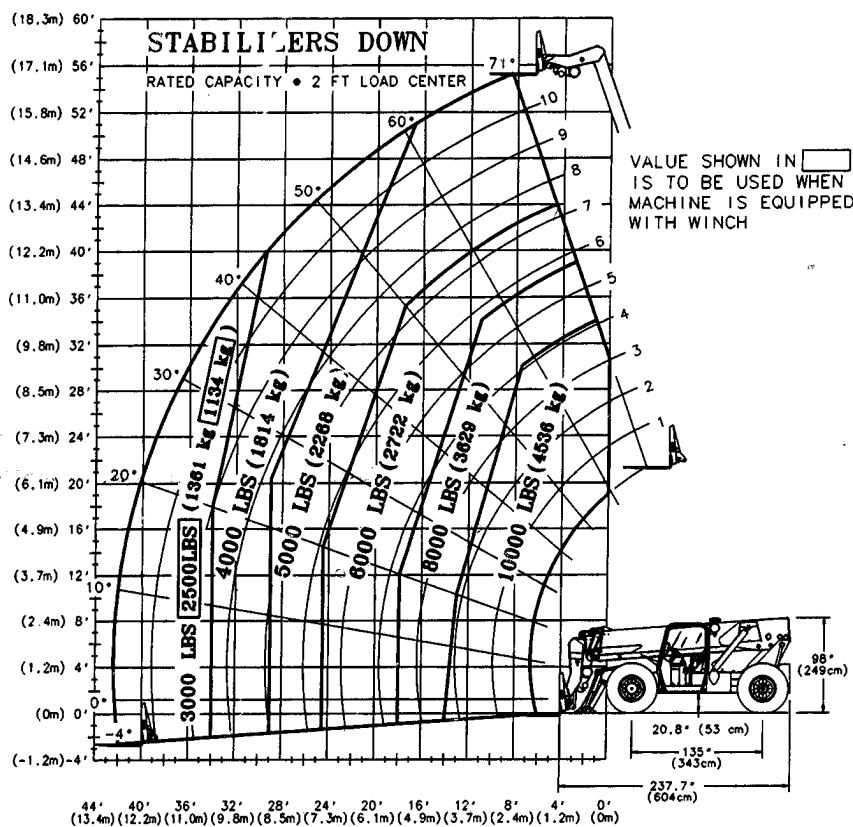
10' (3 m)

72" Carriage

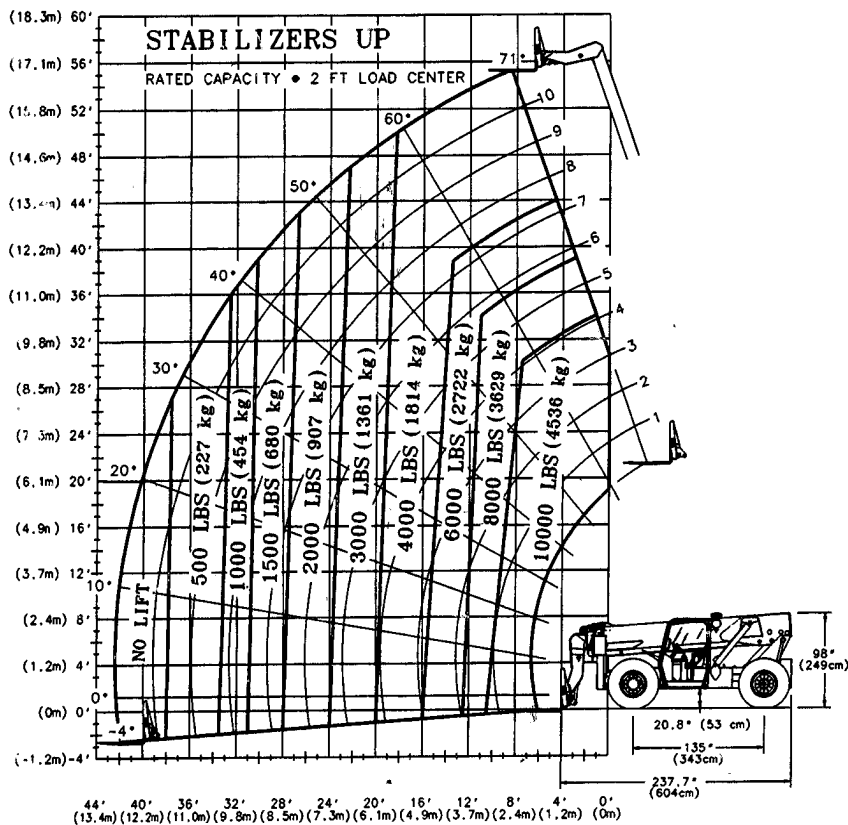
This information is for reference use only. Operators manual should be consulted and adhered to.

Please contact CONNELLY CRANE RENTAL at (313) 531-2700 for further information.

544D (4-Section Boom) Stabilizers Down



544D (4-Section Boom) Stabilizers Up



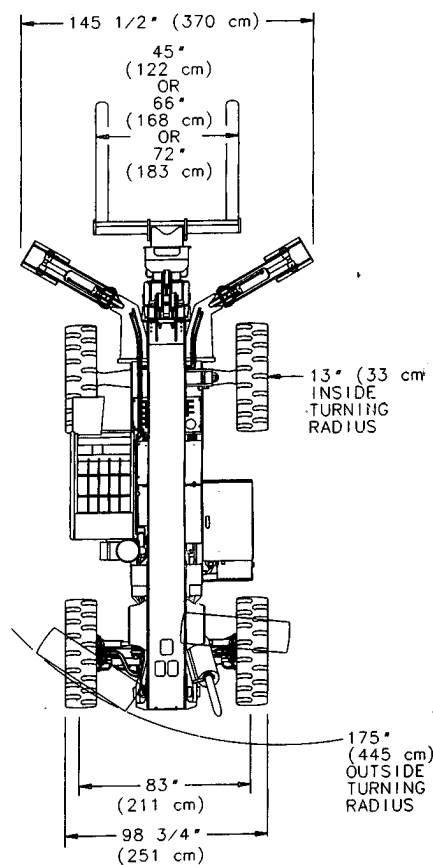
IMPORTANT

Rated lift capacities shown are with machine on a firm, level surface with undamaged, properly inflated tires. Machine specifications and stability are based on rated lift capacities at specific boom angles and boom lengths. If specifications are critical, the proposed application should be discussed with your dealer.

DO NOT exceed rated lift capacity loads, as unstable and dangerous machine conditions will result.

DO NOT tip the machine forward to determine the allowable load.

Gradall does not approve the use of its material handlers for lifting personnel under any conditions.



This machine is designed to meet specifications of ASME B56.6a-1994. It is Gradall Policy to continually improve its products. Therefore, designs, materials and specifications are subject to change without notice and without incurring any liability on units already sold. Units shown may have optional equipment.

GRADALL®

406 Mill Ave. SW, New Philadelphia, Ohio 44663
Phone (330) 339-2211 Fax (330) 339-8468
<http://www.gradall.com>